

United Associations Conference 2022 Program



March 3-4, 2022

Sedgwick County Extension Education Center

**Kansas Association of Family and Consumer Sciences
Kansas Association of Teachers of Family and Consumer Sciences
Kansas Extension Association of Family and Consumer Sciences**

General Registration Information

Location: Sedgwick County Extension Education Center; 7001 W. 21st Street N, Wichita (located at 21st and Ridge Road)

The 22nd United Association's Conference, Soaring to New Heights with FCS will be held March 3-4, 2022 in Wichita. Join your family and consumer sciences colleagues for networking and professional development.

Early Bird Registration:

The planning committee has identified great keynote speakers and a variety of breakout sessions to support your work.. **Early bird registration is available through February 18. See link below.**

Registration Fees:

Early Bird Registration:	One Day - \$85	Two Days - \$130
Regular Registration (Begins Feb. 19):	One Day - \$110	Two Days - \$155
Onsite Registration:	One Day - \$130	Two Days - \$180
Students:	One Day - \$15	Two Days - \$30
FCE & EHU group members/Retirees:	One Day - \$20	Two Days - \$30

After February 19, refunds for early bird and regular registration incur a \$50 administration fee.

Payments to be made to: **KAFCS-UAC**
Payments mailed to: Attn: Sharon Frankenbery
8736 Pratt Rd
Altoona, KS 66710

Early Bird Registration **ends February 18**. If you would like to take advantage of the Early Bird Registration, but have not received a check or purchase order number, please complete the registration form and note the situation. After registration is received, you will receive an email confirmation/invoice. Please arrange for payment prior to attendance at the conference.

Register now:

https://kstate.qualtrics.com/jfe/form/SV_9BwtnWi4cQnXW4u

NEW for 2022:
Tools of the Trade Book Swap



How it Works:

Step 1. Bring in books that you no longer want (maximum 4 per person, please). These can be fiction, non-fiction, they can relate to our jobs, or be just for fun. Bring your books to the UAC Book Swap Table by 1:00 p.m. Thursday, March 3

Step 2. Earn Tickets... Each book you bring is worth one ticket, which you can use to shop for “new” books!

Step 3. REDEEM your tickets and shop for some new-to-you books to take home! Shopping begins Thursday at 1:30 p.m. and will be open until 1:00 p.m. Friday

At the end of UAC, any unclaimed books will be available as attendees leave the conference. If there are any leftovers, they will be donated.

Questions? Contact Janet Holden at holdenj@ollsm.com

Returning Favorites:

Please note there is a registration option for EHU/FCE members and retirees - please consider who in your community might want to attend with you!

Professional Pride - Showcase awards received or great ideas with a display of your work, student creations or other things of interest. Items will be displayed throughout the conference (or just the days you attend).

Professional Idea Sharing - Thursday, March 3 will feature YOUR GREAT ideas at round table lightning rounds.

KSU/PSU Round Tables – Thursday, March 3, the students will provide sessions on Innovative Technology Tools

Exhibitors/Vendors - Thursday, March 3 is a time for you to connect with exhibitors and vendors of products and services that support Family and Consumer Sciences education.

Note: There will be a Mother’s Room available.

Lodging:

Comfort Suites Airport (316) 773-1700

7515 W Taft St

Wichita

\$90 plus local tax includes breakfast

Confirmation # 795620843

Block held until February 20

Hampton Inn (316) 942-2000

7230 W Harry St

Wichita

\$114 includes breakfast

Block held until February 15

Holiday Inn (316) 260-4070

10750 Hampton Lake

Maize

\$109 includes breakfast

Block held until Feb 18. Can book by visiting the link below.

Mention United Associations Conference to get the group rate. Conference attendees make their own reservations and work out payment/direct billing details with the hotels. You must supply a copy of your tax-exempt certificate in order to get the sales tax removed from your hotel statement.

<https://bit.ly/UnitedAssociationsConference2022>

AAFCS PDUs:

AAFCS PDUs will be available. Contact Janet Holden at mrsjanetholden@gmail.com for more information.

Graduate Credit Opportunity:

Conference participants will have the option of earning 1 hour of graduate credit from Baker University by attending all sessions of the conference and completing a follow-up activity. Registration and payment (\$80) must be made **through Baker University's website:** https://bakeruniversity.formstack.com/forms/fcs_coop_reg_form

Requirements for this graduate credit will be available at registration or by contacting sharonfrankenbery@gmail.com

Lunches: Lunches both days are included in the registration fee. Both meals are being catered by Corporate Caterers in Wichita. A vegetarian option will be available on Friday. No other special orders will be taken, so please make other arrangements if meals do not meet your needs.

Snacks: Light Snacks will once again be provided between sessions.

Exhibitors/Vendors: Exhibits will be open Thursday from 9 AM to Noon. Please visit the vendors and thank them for participating. This year will also include a Professional Pride section - please consider sharing something for others to see.

On-Site Schedule: At the end of this conference information is an overview of the schedule for the 2022 UAC. A complete schedule with room locations will be available at the registration area during the conference.

Special notes from Planning Committee:

Due to the **limited WIFI availability**, conference participants are asked to allow the presenters priority with the WIFI service at the Extension Office. Please be considerate of this limitation in order to provide quality professional development for all.

The meeting rooms in the conference section of the facility are **generally cool** so please plan accordingly. The Extension staff does not control the temperature. It is regulated from an off-site facility.

General Session Keynote Speakers

Thursday Opening Keynote Speaker:

Michael Gibson, KSU Associate Professor

“Sustainability at Home: Practical Habits and Methods for Greener, Healthier Homes”

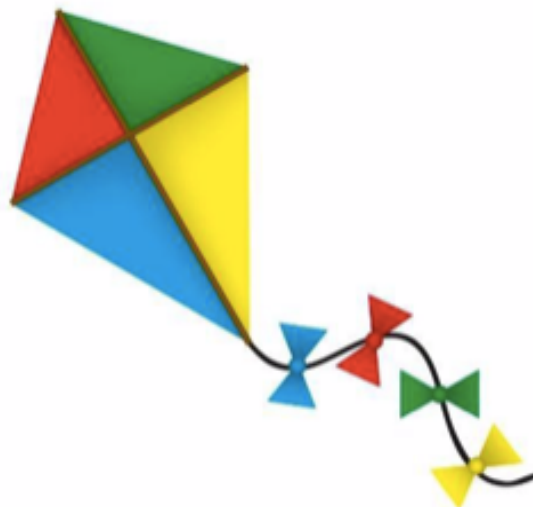
The Net Positive Studio at K-State is a research, design, and building program that seeks to demonstrate the broad tenants of sustainability in its work on affordable, net zero housing. Drawing from the studio's first three years of work, the presentation will discuss how the studio's work uses innovative but repeatable passive design strategies and prefabricated construction methods to create homes that address our nation and state's current housing affordability and sustainability crisis. A cornerstone of the studio's work is the idea that affordable, sustainable houses don't just save money through energy efficiency, but make homes that give back to families and their communities through benefits that touch on themes of health and wellness, resilience, and connection to neighborhood, nature, and place.

Friday Closing Keynote Speaker:

Tabatha Rosproy, 2020 National Teacher of the Year

The Power of Building Community in PreK and Beyond

Join Kansas educator and 2020 National Teacher of the Year, Tabatha Rosproy, in celebrating the profound impact we make as educators when connecting our schools to our communities. Rosproy will highlight the work of Winfield school district in creating an intergenerational preschool classroom housed inside of a local nursing home and retirement village, as well as the lessons she has taken with her into her new journey as an educator.



Thursday Session Information

2022 UAC SCHEDULE

Thursday, March 3

8:00 am Registration

8:00 am- KAFCS Business Meeting
9:15 am

9:00-Noon Exhibits & Professional Pride Book Swap

9:00-10:50

Professional Idea Sharing - A List of Sessions will be available when you enter this session.

This session is designed to share BEST PRACTICES from all of the various professions involved at this Conference. Volunteers will be sharing some of their most successful activities/lessons/strategies from their areas of expertise. This is frequently one of the most sought after sessions if you want to get ideas that are ready to implement and create renewed energy in your chosen profession.

11:00-11:50

Making Personal Finance “Hands-On”

Goldie Prelogar, PSU, Associate Instructional Professor

Understanding financial concepts and actually handling your finances in a positive and mature way are distinctly different. Process-oriented financial examples and visual aids are essential for moving from financial literacy to financial capability. In this session we'll go over hands-on activities and visual aids to make complex concepts like investing more digestible for our students. Supplies and curriculum will be provided.

Toxic Stress and Our Health

Ellen Teran, ICT SOS, Education Facilitator

ICT SOS aims to end human trafficking through prevention and awareness education; advocacy for survivors; and acting as a bridge between direct service professionals and community members who desire to help. This presentation will focus on helping professionals accurately define human trafficking, will discuss several common scenarios of human trafficking involving youth, will discuss where to report instances of suspected human trafficking, and will equip participants with resources across the state of Kansas that are immediately available for students.

Sustainable food and material management – feeding people, not landfills

Nancy Larson, K-State Pollution Prevention Institute

During this session Nancy will explain the social, economic and environmental impacts related to preventing food waste and provide practical solutions as a call to action for attendees.

Cotton Production in Kansas

Rex Friesen, Southern Kansas Cotton Growers Cooperative, Inc.

Consulting and Public Relations Representative

Listeners will learn about what cotton is and how it grows, how cotton is produced in Kansas, and current status and trends within Kansas and the industry.

12:00-1:30

Lunch and Keynote:

“Making Home Affordable and Sustainable: the Work of the Net Positive Studio at Kansas State University”

Michael Gibson, KSU asst. professor College of Architecture

The Net Positive Studio at K-State is a research, design, and building program that seeks to demonstrate the broad tenants of sustainability in its work on affordable, net zero housing. Drawing from the studio's first three years of work, the presentation will discuss how the studio's work uses innovative but repeatable passive design strategies and prefabricated construction methods to create homes that address our nation and state's current housing affordability and sustainability crisis. A cornerstone of the studio's work is the idea that affordable, sustainable houses don't just save money through energy efficiency, but make homes that give back to families and their communities through benefits that touch on themes of health and wellness, resilience, and connection to neighborhood, nature, and place.

1:45-2:35

Teaching Strategies for Alternatives to Four Year Colleges

Goldie Prelogar, PSU, Associate Instructional Professor and Josie Osterhaus

In this session we will go over curriculum and activities you can use with your students for a deeper understanding of alternatives to traditional college. We'll look at details for specific branches of the military, trade schools, and modern apprenticeships and how to use ASVAB and MEPS in your class and scholarships and the GI bill. Bringing in local guest speakers from trades and those who have completed apprenticeships round out their learning. We'll also go over the free canned curriculum you can use to jazz up or supplement your college planning units or courses.

Domestic Violence Prevention

Brenda Butcher, Family Life Center, Safehouse Advocate

Bringing awareness to domestic violence and/or teen dating violence while students are in high school is critical in our fight to end violence in all homes. While students are learning about themselves and start thinking about relationships, they are already learning and developing both healthy and unhealthy patterns in those relationships. While working with teachers and students as an advocate, my main focus is the prevention of these unhealthy patterns. Once violence has happened then as an advocate my focus is shifted to empowering the survivor to get the help/ services they need to begin the healing process. Taking a trauma informed approach to our students we could all make a difference in living a violence free future.

Creating a better living environment for children with ASD (autism spectrum disorder)

Georges Fares, KSU instructor

Understanding the basics of Autism Spectrum Disorder among children at home and in schools and learning how it's directly affected by our surroundings and how we can use space to deal with the disorder.

2:45-3:35

“Sustainability at Home: Practical Habits and Methods for Greener, Healthier Homes”

Michael Gibson, KSU Associate Professor

With housing in the U.S. consuming more energy than any other sector (including commercial buildings, transportation, industry, and agriculture) it is urgent that we improve the way we use energy at home. Content and concepts from the session are part of a ‘user manual’ from the Net Positive Studio at Kansas State University, under development to assist new homeowners who move into the studio’s net zero homes. Drawing from teaching, research, and design work on the cutting edge of building science, this workshop translates several concepts behind green homes into habits and methods that anyone can understand and practice at home.

Textiles Projects for the Differently Abled

Molly Kough, Scott City Middle School FCS

The focus of this workshop is to collect resources, techniques, and ideas to provide opportunities for differently abled students to fully participate in a sewing or textile-based class or unit. Attendees will be provided with a set of lesson plans that they can use in the classroom, as well as opportunities to try a few of the techniques or strategies in person.

Internet Safety

Detective Jennifer D. Wright, Wichita PD, KS Internet Crimes Against Children Task Force

Detective Wright has investigated thousands of child sexual exploitation cases while assigned to the Kansas Internet Crimes Against Children's Task Force for the past 22 years. This presentation will focus on an overview and history of the task force along with identifying trends utilized throughout the years by predators to gain access to children using the Internet. Participants will gain knowledge of resources available to assist with education of youth along with tools available to keep youth safe online.

3:45-5:15: KSU/PSU Students: Innovative Technology Tools

A list of Sessions will be available when you attend this session.

5:15: 2022 KAFCS Event: Creating Culture / Changing Culture

Dr. Duane Whitbeck & the KAFCS officers

This event will provide an opportunity for both seasoned professionals and emerging stars to learn from each other about how they establish and change culture within their work environments leading to a stronger future. Information will also be shared about communicating who and what we are to leaders and stakeholders at every level.

Friday Session Information

2022 UAC SCHEDULE

Friday, March 4, 2022

8:00 am Registration

8:00 - KATFACS Business Meeting
9:00 am

9:00-9:50

FCCS Pathway Curriculum Updates

Emily Schmidt & Amy Nail, Olathe School District

Learn more about the new KSDE curriculum changes for the FCCS Pathway starting in 2022, Highlighting two new courses, Relationships & Personal Development and Lifespan Development. Attendees will leave with pacing guides and resources for teachers.

Direct Support Professional (DSP) Badge Certifications

Dee Nighswonger, LMSW, LCAC, NADD_DDS Sedgwick County Developmental Disability Organization, Director

This session is designed to provide teachers with information to grow their understanding of opportunities for students related to a career in the Intellectual/Developmental Disability Service System. Specific information about the new Direct Support Professional (DSP) Badge Program at Wichita State University will be shared. Additional context for student opportunity to acquire early college credit and preparation for potential participation in the new DSP Registered Apprenticeship Program in Kansas will be covered.

Slow Living: The Connection between the Slow Fashion & Slow Foods Movement

Nina Winter, Owner & Instructor at TISSU Sewing Studio

Nina Winter, owner of TISSU Sewing Studio & MOKKO Cuisine in Wichita, KS, is an advocate and educator for Slow Living (how to live a more sustainable life through art, fashion and food). She will share her personal story, mission, vision statement and examples of the Slow Fashion Movement and the Slow Foods Movement, emphasizing an ethical world where people, planet, animals and nature are prioritized over profit.

Classroom Gardening & Partnerships with Ag

Misty DeDonder & Northern Heights Students

10:00-10:50

The Role of Child Care Aware of Kansas in Early Childhood

Kelly Cain-Swart & Kris Nicholson

Come learn about the services Child Care Aware of Kansas offers for child-care programs, families & communities.

Integrating FCCLA STAR Events in the Classroom

Pam Lamb & Kacey Preston

No time for FCCLA? Integrate it into your classroom to lighten your load with lesson plans and resources already available. Use competitive events in your classes by allowing students to create projects that connect to your curriculum.

Slow Living: The Connection between the Slow Fashion & Slow Foods Movement

Nina Winter, Owner & Instructor at TISSU Sewing Studio

Nina Winter, owner of TISSU Sewing Studio & MOKKO Cuisine in Wichita, KS, is an advocate and educator for Slow Living (how to live a more sustainable life through art, fashion and food). She will share her personal story, mission, vision statement and examples of the Slow Fashion Movement and the Slow Foods Movement, emphasizing an ethical world where people, planet, animals and nature are prioritized over profit.

11:00-11:50

Competency Frameworks, Skill Based Hiring & Student Preparation

Dee Nighswonger, LMSW, LCAC, NADD_DDS

Sedgwick County Developmental Disability Organization, Director

This session is designed to provide teachers with useful information to enhance their understanding of opportunities to better prepare students for competitive employment upon graduation. Specific information about the new Direct Support Professional (DSP) competency Framework will be shared. This framework creates the foundation for new opportunities for students interested in a career path within the Intellectual/Developmental Disability (IDD) service system.

Healthy Together: A Look at Communal Meals

Deb Andres, M.S., Geary County K-State Research & Extension, Family & Consumer Sciences Agent

As part of my work with our food policy and resource organization, Live Well Geary County, a Healthy Together Communal Meals program began on November 1, 2021. The initial target population was low-resourced senior citizens with expansion to families after the first of the new year. Opportunities, challenges, resources, and next steps will be included in the presentation as well as time to explore how FCS professionals and secondary FCS students can contribute to this public service opportunity.

FCS Activities To Go

Becky Reid, K-State Research & Extension - Family & Consumer Sciences Agent

What if there was something to “check out” to engage youth at school or community events?

K-State Research and Extension has a variety of kits and tech trunks featuring FCS Activities to Go. Join Becky Reid, Extension Agent, for hands-on activities.

Grassroots Efforts for Rural Kansas

Kerri Falletti, Grassroots Strategy Developer, Office of Rural Prosperity, Kansas Department of Commerce

The Office of Rural Prosperity (ORP) advocates for and promotes rural Kansas and focuses on efforts designed to aid rural improvements. As a division in the Kansas Department of Commerce, ORP is part of the economic development team that is solely focused on the growth and prosperity of rural Kansas. After two state-wide listening sessions, discussions established the foundation and priorities of ORP. ORP also partnered with the Kansas Sampler Foundation to create the Power Up & Go report in order to gain a better understanding of the current barriers and opportunities young Kansans face in regard to rural parts of the state. This presentation will touch on efforts surrounding the ORPs primary areas of focus: childcare/early education, healthcare/wellness, rural housing, broadband, workforce and community development.

12:00-2:00

Lunch, Keynote, and Closing Session

The Power of Building Community in PreK and Beyond

Tabatha Rosproy - 2020 National Teacher of the Year

Join Kansas educator and 2020 National Teacher of the Year, Tabatha Rosproy, in celebrating the profound impact we make as educators when connecting our schools to our communities. Rosproy will highlight the work of Winfield school district in creating an intergenerational preschool classroom housed inside of a local nursing home and retirement village, as well as the lessons she has taken with her into her new journey as an educator.

UAC 2022 Conference Schedule

Wednesday, March 2

4:00 p.m.	UAC Planning Committee Meeting (Room set-up, signage, decorations)
5-6 p.m.	KAFCS Board Meeting
6-7 p.m.	KATFACS Executive Council Meeting

Thursday, March 3

8:00 a.m.	Registration
8:00 - 9:15 a.m.	KAFCS Meeting
9:00 a.m.- Noon	Exhibits & Professional Pride Tools of the Trade Book Swap (deposit by 1 p.m.)
9-10:50 a.m.	Professional Idea Sharing
11-11:50 a.m.	Breakout 1 - <i>Making Personal Finance “Hands-On”</i> ; <i>Toxic Stress and Our Health</i> ; <i>Sustainable food and material management – feeding people, not Landfills</i> ; <i>Cotton Production in Kansas</i>
12:00 - 1:30 pm	Lunch Welcome/Opening/Lunch & Keynote: Michael Gibson, KSU asst. professor College of Architecture “Making Home Affordable and Sustainable: the Work of theNet Positive Studio at Kansas State University”
1:00 pm	Bookswap opens (through Friday at 1 p.m.)
1:45-2:35 pm	Breakout 2 - Teaching Strategies for Alternatives to Four Year Colleges; Domestic Violence Prevention; Creating a better living environment for children with ASD (autism spectrum disorder)
2:45 3:35 pm	Breakout 3 - <i>“Sustainability at Home: Practical Habits and Methods for Greener, Healthier Homes”</i> ; <i>Textiles Projects for the Differently Abled</i> ; <i>Internet Safety</i>
3:45 - 5:15 p.m.	PSU/KSU Student Round Table Showcase: <i>Innovative Technology Tools</i>
5:15 p.m.	KAFCS Event: <i>Creating Culture / Changing Culture</i>

Friday, March 4

8:00 am	Registration
8:00-9:00 a.m.	KATFACS Meeting
9:00- 9:50	Breakout Session 4 - <i>FCCS Pathway Curriculum Updates</i> ; <i>Direct Support Professional (DSP) Badge Certifications</i> ; <i>Slow Living: The Connection between the Slow Fashion & Slow Foods Movement</i> Nina Winter, Owner & Instructor at TISSU Sewing Studio; <i>Classroom Gardening & Partnerships with A</i>
10:00- 10:50 a.m.	Breakout Session 5 - <i>The Role of Child Care Aware of Kansas in Early Childhood</i> ; <i>Nutrition Resources</i> ; <i>Integrating FCCLA STAR Events in the Classroom</i> ; <i>Slow Living: The Connection between the Slow Fashion & Slow Foods Movement</i> Nina Winter, Owner & Instructor at TISSU Sewing Studio; <i>Grassroots Efforts for Rural Kansas</i>
11:00-11:50 a.m.	Breakout Sessions 6 - <i>Competency Frameworks, Skill Based Hiring & Student Preparation</i> ; <i>Healthy Together: A Look at Communal Meals</i> ; <i>FCS Activities To Go</i> ; <i>Grassroots Efforts for Rural Kansas</i>
Noon - 2:00 p.m.	Lunch/ Closing & Keynote: Tabatha Rosproy, 2020 National Teacher of the Year <i>The Power of Building Community in PreK and Beyond</i>
1 p.m.	<i>Book swap ends</i>
2:15 p.m.	Door Prizes and Evaluations Committee Evaluation Meeting

